

SMS ROMPIN' STOMPIN' RAIDER BAND

# BAND AID 2018-2019



# What is the Band Aid?

The Band Aid is a comprehensive guide to the band year. It answers virtually every question you might have about the Shawnee Mission South Rompin' Stompin' Raider Band. You NEED this handy reference book! *All families should bookmark or print a hard copy for easy reference.*

You can find this document on the band's website under the *Parent Boosters* Tab. Because it contains band members' addresses, phone numbers, and emails, this document is password protected. The password will be sent via a Newsflash by the Webmaster after the new Band Aid is published. Should you have problems opening a password protected tab, please be sure that the web address below appears in your browser's location bar when viewing the page. This is the "official" web address set up by our server. The address [www.smsraiderband.org](http://www.smsraiderband.org).

Not only does the Band Aid have detailed information regarding the band program, it also is the source for Band Boosters information. One of the great things about the Rompin' Stompin' Raider Band Booster Club is the fact that there are so many ways to be involved, from the smallest of tasks and up. The Band Aid can be your resource for making the right connection. See Page 28 for the Volunteer Information. Feel free to contact chairpersons directly. Contact information is available for the Committee Chairpersons in a separate file along with the full band member roster.

If you find any information that is incorrect, including student contact information in our directory, please contact Tina Monks at [tinamonks3@yahoo.com](mailto:tinamonks3@yahoo.com), so that it may be corrected. Corrections, especially e-mail addresses, are needed so that you will receive timely information throughout the year. Material in the Band Aid was current as of late July 2018 and reflects information on file in school records.

## Handy FYI's for New Band Parents

**Register on the band website** to receive "Newsflashes." Newsflashes come in the form of an email with a link to the full message on the website. This is the PRIMARY mode of communication between parents, Mr. Adams, and the Booster Club. Sign up to be a member of [www.smsraiderband.org](http://www.smsraiderband.org) then "Follow" each news stream to get update notifications delivered directly to your email. Watch this video for detailed instructions: <https://www.youtube.com/watch?v=Qy3-0YdFMfk>

**Admission to football games:** Student with activity pass = free home games / Student ID = \$3 / General Tickets = \$5. Season passes to all SMS (ONLY) sporting events are available in the SMS Office. Gold cards (free admission) are available to people living within the SM boundaries who are 60 or older <http://www.smsd.org/community/pages/gold-cards.aspx>

**Before the band marches out:** With the construction this past year in the stadium, we are not yet sure where the band "march out" will be. When we know, a band booster blast with details will be sent out. FYI, for new parents, In past years, parents line up across the round drive close to the gate to the left of the ticket booth. The band marches out from the band room and we cheer them in. Each section does a little "something original and special" as they march in.

### When will my band student march?

The 1st hour band marches pre-game and half-time shows. Freshman band remains in the stands during half-time. The Freshman Band (aka 5th hour band) marches only in the pre-game show.

**At Marching Contests:** Be sure to look for the Green and Gold fans in the stands. They're easy to find because there are so many! It's more fun to attend the marching competitions when everyone sits together, and the kids can hear all the support!





### **Important Note!**

All band members should register for school on one of the dates that does not conflict with band camp. You do not have to register on the day assigned to your grade level.

**For detailed Band Camp Information, see Pages 10-11.**

## Welcome to South's Rompin' Stompin' Raider Band!

Welcome to South's Rompin' Stompin' Raider Band! You are entering a program with a rich history of great music, exciting performances, and priceless student interactions. The Band is comprised of students that are involved in every other activity in this great school. We are a wonderful cross-section of SMS who are brought together by music! You will find opportunities for leadership, self-expression, self-improvement, and one of the ultimate team endeavors-making music in an ensemble. You will also march in the green and gold before enthusiastic crowds that know they are seeing and hearing one of the finest marching bands in the region. Our fans are downright fanatical!

While you are enjoying your summer, much has been going on to make this an amazing year. Emma and Kate have already been to drum major camp in Arkansas. They are both full of new ideas and plans based on what they learned. Both were recognized as Star Commanders at camp! Yeah, they are the BEST! Mr. Schapker has been working all summer to perfect our show's drill and concept. Get ready for some fun, New Orleans Style! It is so cool! If you liked Dracula last year, wait until you meet our Witch Doctor! Your band staff can't wait to help you have a great year-Miss Hartwell, Mrs. Hoelscher, Mr. Maslak, and Mr. Schapker are the best! Of course, we work hand in hand with the Pacesetters and JV Pacesetters and their coaches, Mrs. Long and Mrs. Williams. Oh, last year's student teacher, Mr. Adair, will be helping us out, too!

We have another fantastic freshman class joining us! Old timers heard these guys recently at the South Area Festival and could tell this crew was special. They lived up to and exceeded expectations in New Marchers' Camp at the start of the summer. Yeah, we are going to just get better with the help of these guys. Welcome to our new Raiders!

Throughout the year, we will work hard to raise our individual and ensemble skills. Last year's band set the bar very high! A band cannot be great if it is not full of great players. Find a regular time to practice this summer and start or continue your lessons (almost all of our best players study privately). The symphonic band audition material is posted on the website-get the music and get to work! In many respects, playing an instrument is similar to athletic performance; you must build your strength, precision, and endurance on your instrument to really be an asset to the band. There is no quick fix-steady smart practice is what gets you to a higher level. The reward for all this preparation is that the stronger a player you are, the more you will enjoy your musical involvement and the more impact you will have on the success of the group.

Please take the time to go through the band's calendar and integrate it with your family's. Every member is essential to each of our performances but if there is an unavoidable conflict, let me know as early as possible. Read through this entire handbook and refer to it any time questions arise. We've improved it every year to help students and parents to be aware of and understand the many activities of the band. Look through all of the offerings on this website; it is constantly updated with the information you need to participate in, enjoy, and support this great band.

And, yes, it is a Europe year! We will be hosting the band from Germany in April and Symphonic Band will head for Germany and another destination right after school gets out. Watch for details! Here we go! 2018-19 is going to be one to remember!

Steve Adams

<b>Marching Season Calendar</b>				
Friday, August 3	6-8pm	Band Beach Party	SM Park	All Band Students
Wed, August 8	6:30-7:30pm	Raider Rally	SMS Gym	Band leaders & Volunteers
Monday, August 13	6-7pm	Indian Woods Welcome Back Party	IWMS	1 <sup>st</sup> & 5 <sup>th</sup> Hour Band
Friday, August 31	6:30 pm	Away Game vs SMN	SMN Stadium	Volunteer Pep Band
Friday, September 7	5pm	Pot Luck Dinner	Cafeteria	All Band Families
Friday, September 7	6:00 pm	Home Game vs. SMW	SMS Stadium	1 <sup>st</sup> & 5 <sup>th</sup> Hour
Thurs, September 13	6:00 pm	Home Game vs. Lansing	SMS Stadium	1 <sup>st</sup> & 5 <sup>th</sup> Hour
Sat, September 15	All day	Mattress Fundraiser	SMS Gym	Volunteers
Friday, Sept. 21	6:00 pm	Home Game vs Olathe South (Homecoming)	SMS Stadium	1 <sup>st</sup> & 5 <sup>th</sup> Hour
Thurs, Sept. 27	6:30 pm	Away Game vs. SME	SMN Stadium	Volunteer Pep Band
Sat. September 29	9:00 am	Overland Park Parade	Downtown OP	1 <sup>st</sup> & 5 <sup>th</sup> Hour Bands
Monday, October 1	6:00 pm	SM Marching Festival	SMS Stadium	1 <sup>st</sup> Hour Band
Friday, October 5	6:00 pm	Home Game vs. Lawrence	SMS Stadium	1 <sup>st</sup> & 5 <sup>th</sup> Hour Bands
Saturday October 6	All day	Lee's Summit North Marching Festival	Lee's Summit	1 <sup>st</sup> Hour Band
Monday, October 8	6:00 pm	SM Marching Festival Rain Date	SMS Stadium	1 <sup>st</sup> Hr Band
Friday, October 19	6:00 pm	Home Game vs. SMNW	SMS Stadium	1 <sup>st</sup> & 5 <sup>th</sup> Hour Bands
Saturday, October 20	All Day	Festival of Champions	Warrensburg	1 <sup>st</sup> Hr Band
Friday, October 26	6:00 pm	TBD Home or Away determined by record	TBD	Marching Band

**Rompin' Stompin' Raider Band Marching Season Calendar of Events:**

*See the online calendar for events and dates for the remainder of the year.*

*The dates listed below could change. If this happens, a Newsflash will be sent from the website.*

[2018-2019 Online Calendar](#)



**2018 Band Camp**

Did you know that we practice as much during camp as we do in the whole month of September? It is our most productive time. Please make note of the dates and times so that we have full attendance for camp. If you have a conflict, make sure to let Mr. Adams know ASAP so that we save you a spot and make plans to get you caught up.

Dear Band,

Welcome fellow band-mates and band-parents, to the wonderful Rompin Stompin Raider Band! If you are a freshman student or parent, then we all hope you enjoy our organization for its incredible student leadership, work ethic and, of course the great music. For the freshmen and new marchers, if you are worried by the details of marching, memorizing music, and all the other challenges in the marching band, you have no need to worry. We have band staff (such as Mr. Adams or Soon-to-be-Mrs. Hartwell), section leaders, and our wonderful drum majors, Emma Ross and Kate Herrmann, that will gladly help you with any issues you have concerning the band. Every member is given an opportunity to make an impact based on their determination, creativity, musicianship and how responsible they are.

The show this year features New-Orleans-jazz type of music and will feature a voodoo witch doctor! I am excited for this style of music as it is something different than you will hear from any other bands and a first for us. I'm sure the drills are going to be wonderfully designed since we have the privilege to have Mr. Schapker creating the charts (who created the show last year that got us third place in Warrensburg, might I add).

The marching season is going to have a mixture of emotions. It will be tiring. It will be exciting. It will be fun (if you make it). It will have tough challenges and rewarding experiences. We are all one band. We help each other and support each other. Take advantage of each performance, at football games and competitions, to show off our hard work. It's fun to march in the band, but it's thrilling to march well **together**. Let's march our butts off and keep smiles shining throughout the across the band the whole season.

From,  
Elliot Huels  
Band President



## 2018-19 Officers

President	Elliot Huels
Secretary	Kelli Pavlu
Band Manager	Brandon Kirmer
Sophomore Rep	Jay Selzer
Field Captain	Emma Ross
Junior Drum Major	Kate Herrmann

## Student Leaders



Making these decisions is terribly difficult because we have more people with the desire and qualifications to be great leaders than we have available positions. If you did not get a position, your ideas and talents are still very much needed. True leadership is earned, not awarded. Get in there and make your best contribution and everyone will benefit. Officers teach during camp and basically function like additional section leaders during the season.

To those assigned leadership positions, congratulations! You have been given great responsibility for the success of our group. Now live up to your commitment. If you find you cannot (or I find you will not), you will need to step down. Give us your best! The group depends on you.

Head section leaders, please give freshmen and new members a welcoming phone call that lets them know we are excited for them to join us and to answer any of their questions. If there is someone in any grade that should be in your section but isn't signed up, invite them to come back.

## 2018 Section Leaders for Marching Band

*After head section leader, other section leaders are listed in alphabetical order.*

### **Trombones**

*Caleb Kutz-co-head  
Calvin Nelson-co-head  
Corbin Wood*

### **Tubas**

*Jacob Legg-head  
Sky Thao*

### **Frumpets**

*Audrey Hartwell-head  
David Rope*

### **Trumpets**

*Elliot Huels-head  
Julian Duff  
David Rangel*

### **Flute**

*August Chowning-head  
Anna Leverson  
Grace Markum*

### **Clarinets**

*Blake Hardesty-head  
Katie Horner  
Nicole Thomas*

### **Alto Saxophones**

*Kelli Pavlu-head  
Jessica Pierce  
Drew Woodley*

### **Tenor Sax**

*Luke Vohs-head  
Jane Swanberg*

### **Baritones**

*Drew Wollard*

### **Percussion**

*Nick Velicer-co-head-line  
H Kopp-co-head-line  
Will Cooper-pit*

## ELECTED POSITIONS

*All officers and section leaders are expected to participate in all fall Pep Band activities.*

**President** (must be a senior): Chief Representative for the band and in charge of band officer meetings. The President designs the annual band T-shirt and is in charge of the annual Band Beach Party and the Year End Band Picnic with the help of the other band officers.

**Band Manager** (must be a junior): Is in charge of setting up and taking down field sound system and markers. The Manager will assist staff in organizing the loading of equipment for travel and other setup/tear down projects throughout the year.

**Sophomore Representative/Assistant Band Manager** (must be a sophomore): Assists the Manager in all tasks.

**Freshman Representative** (must be a freshman): In charge of setting up the field sound system in 5th hour and conducting the 5th hour band in the stands when the 1st hour band leaves for half-time. This officer will be elected by the 5th hour band early in the fall semester.

**Senior Secretary** (must be a senior): In charge of roll taking and money collection and distribution.

**Junior Secretary** (must be a junior): Assists the Senior Secretary/Treasurer in all activities and ***automatically becomes the Senior Secretary the following year.***

**Field Captain:** Is in charge of New Marchers' Camp and student leaders on the field. Also responsible for training and auditioning candidates for the following year's senior and junior drum majors.

**Junior Drum Major:** Assists the Field Captain in all activities and ***automatically becomes the Field Captain the following year.*** This person is selected at the end of his/her sophomore year.

**Section Leaders** (must be juniors or seniors): In charge of musical and marching training for their sections, grading music memory, calling and running sectionals. They are ***appointed on the merits of their seniority, playing ability, and leadership qualities.*** During the concert season, the section leader (first chair) is determined by playing ability, and can be from any grade level.

=====

**The above are minimum descriptions!** An elected or appointed position becomes what the holder makes it. A real leader will do much more than the minimum expectancy. That is why, in the past, the band has been so strong. The students have had such pride and dedication to their responsibilities.

**No other band in the area is so dependent on its student leadership.** It really is YOUR band thus it will be as good as you want it to be--if you are willing to work at it. Only the members of the band, spurred on by its student leaders, can develop the pride and tradition that is ***your*** Rompin' Stompin' Raider Band!

### 2018-2019 Band Booster Club Executive Board

Position	Name	Phone	Email Address
President	Tim Kelley	515-5852	<a href="mailto:timokelley@yahoo.com">timokelley@yahoo.com</a>
Vice President	Julie Bogner	816-210-7972	<a href="mailto:KEVJUL4@AOL.COM">KEVJUL4@AOL.COM</a>
Secretary	Pat Duff		<a href="mailto:pat.duff@pgav.com">pat.duff@pgav.com</a>
Treasurer	Debbie Schluben		<a href="mailto:schluben@swbell.net">schluben@swbell.net</a>
Webmaster	Craig Herrmann	381-8143	<a href="mailto:craigh873@gmail.com">craigh873@gmail.com</a>



Hello and Welcome to the 2018-2019 Shawnee Mission South Rompin' Stompin' Raider Band.

We have a long tradition of excellence that includes the best bunch of students and parents that you will find anywhere! The band is exceptional for many reasons, starting with the commitment of every band member, the student leadership, and of course the outstanding direction of Mr. Adams, but they all need our support to achieve their potential. The Band Booster Club plays an important part by working with Mr. Adams to provide assistance wherever necessary in order to enrich every student's band experience.

Band Boosters are involved in every area of the band, from distributing uniforms and providing refreshments to planning the trips to Disney World and Germany! Annual events include a Beach Party, Chili Supper, Evening of Jazz, Pot Luck Dinner and a 5K Run. Between band camp, marching season, concert season, competition season and graduation, there are activities all year long!

Being in the Band Booster Club isn't all about the work. It is fun and rewarding to make connections by getting to know other parents and students as we all work together to achieve a common goal: to help make the band the best it can be. I hope you will take advantage of the opportunities to be involved because you will find a greater sense of community here at South.

Band Booster Club's financial support of the band is critical. We raise money through our fundraisers as well as our Booster Club dues. You will be happy to know that your support of the fundraisers not only benefits the band as a whole, but in some cases, a portion of the profits are deposited into your child's personal band account to help offset their travel expenses to Germany or Florida.

A complete description of dues and fees can be found in the "Band Aid" and also on the Booster Club tab on the website. On the website, be sure to sign up to receive News From Mr. Adams and Booster information to your email. That's the only way to stay informed of all the great things happening this year!

We hope that you will join the Band Boosters and attend one of our upcoming meetings to get all of the latest news from Mr. Adams as well as to help make decisions that affect YOUR band student! Our meetings are usually held on the first Tuesday of each month at 7:00 pm in the band room. All members are encouraged to attend. For a complete list of meeting times and all things band related, please check out the band web site at [www.smsraiderband.com](http://www.smsraiderband.com).

Thanks in advance for all of your help!

**Tim Kelley**

2018-2019 Band Booster President

## 2018 BAND CAMP

### NEW MARCHERS' PARENT MEETING

Wednesday May 30<sup>th</sup>  
7:00 PM  
SMS Auditorium

### New Marchers' Camp

Session 2  
Thursday, July 26<sup>th</sup> &  
Friday, July 27<sup>th</sup>

### 1st Hour Percussion Camp

Thursday, July 27<sup>th</sup> through  
Friday, August 4<sup>th</sup>

### 1st Hour Band Camp

Monday July 23<sup>rd</sup> through  
Wednesday July 25<sup>th</sup>

### Camp Hours Each Day

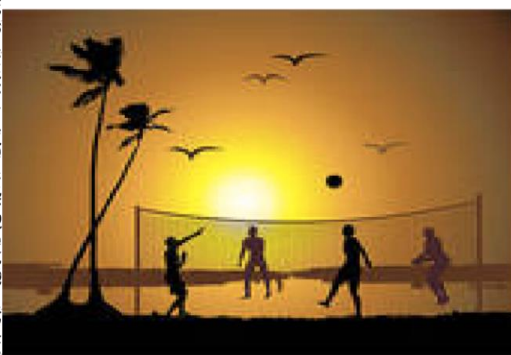
7:30-11:00 am and 12:30-3:00 pm

Band Camp is on weekdays  
only, not on the weekend!

**ATTENDANCE  
IS REQUIRED ON  
ALL DAYS THAT APPLY  
TO YOU!**

### BAND CAMP PARTY

FRIDAY, AUG. 3  
6:00 PM TO 8:00 PM  
@ SM PARK



### Who should attend?

**Officer and Section Leader Meeting:** Those who have been elected as officers or appointed as section leaders need to attend for discussion of camp, plans for the season, and review of fundamentals. Only those who attend will be teachers for New Marchers' Camp, unless prior approval is given by Mr. Adams to miss the meeting.

**New Marchers' Camp:** All those marching in the band for the first time, no matter what their instrument, need to attend. During the first two days, student leaders, under the direction of the Field Captain, will teach the basics of South's marching style, while the staff runs music rehearsals.

**Percussion Camp:** All those who are planning on being members of the drum line or pit percussion need to attend. 5th hour band members will only participate during the first week. Final instrument assignments will be made no later than the 2nd day of camp, maybe earlier.

**1st Hour Marching Camp:** Returning members of the group need to attend. Rehearsals will focus on building individual skills and perfecting the new music. Basic marching skills will be reviewed. Our goal is to completely learn the pre-game show and get a good start into the contest show.



### FAQs

#### What if I can't come?

**Work is not an excuse from any scheduled band practice or performance.** School sports and activity conflicts will be worked out to the student's benefit between Mr. Adams and your coach/sponsor. Very few activities interfere with Camp. If you must miss any part of Camp, please inform Mr. Adams both verbally and with a parent signed note (so he won't forget). If you have a trip or other major conflict, you will be aided by the Junior Drum Major and your section leader so that you can catch up on what you have missed. **It is your responsibility to catch up.** The group depends on the work of its individuals.

#### What should I bring to camp?

Always have your music, pencil, instrument, and drill book\*. Wear comfortable clothes. **No sandals on the marching field--wear tennis shoes! This is a requirement.** It will probably be hot. It is highly recommended that you bring a thermos of ice water, sunglasses, a cap, and sunscreen. When outside, we will take regular breaks for rest and water. Water is a much better choice than soft drinks or almost anything else. **Download permission forms by clicking on the Forms tab on the website, complete, and bring to camp.** \*Drill book--binder for marching music and charts with a strap so it can be worn around neck.



### Tips for a Better Camp

- \* Get outside so the outdoor work during camp won't be a shock. You should "acclimatize" yourself.
- \* Bring water, sunscreen, sunglasses, and hats.
- \* Get your chops (or stick grip) in shape. We will play for about three hours a day. If you are out of shape, you won't last 30 minutes. Besides, the band is only as good as its players. The only way to improve is to practice.
- \* Come with an attitude for success. **Work hard and play hard!**

### Don't Forget, Memorize!

All music sent home in the spring should be memorized BEFORE the first Camp rehearsal. During Camp, section leaders will be giving memory tests. A large part of your first quarter grade will depend on music memorization. **Don't worry: South bands have always marched without music. It has always worked for hundreds of students--it will work for you!**

For the FIGHT SONG, you only have to learn the second ending. We will play the **School Song**, "**Raider Opener**", and "**The Star Spangled Banner**" as written.

LUNCH: I NEED FOOD!



During the lunch break, most members go to the many nearby fast food restaurants or home. Those of you who can't drive and don't want to go home for lunch will find upperclassmen and especially section leaders very helpful in the ride department.

Drivers: make sure all laws regarding how many people can be in your car are followed. Use lunch as a time to create new friendships and renew old ones.

Riders: make sure you get your parent's OK to ride with other students.

### Annual Band Camp Party

Shawnee Mission Park -Friday, August 3, 6:00 - 8:00 pm

There will be socializing, swimming, volleyball, and a picnic dinner. Main dish provided by the band; watch for a Newsflash telling what each grade should bring.

*Parents--The Beach Party is great fun for the students! You can breathe a sigh of relief because these parties are chaperoned by adults, and no drinking or smoking is permitted.*

### Freshman Initiation/Hazing

The Shawnee Mission District has a very specific policy prohibiting any form of initiation/hazing. **Any student found to be involved in such an activity will be removed from band and be subject to severe school discipline.**



## Band Dues

Dues of \$75.00 will be collected from each band member to pay for the official band T-shirt, social activities, the band drill, and part of the band's operating and travel costs. Dues must be paid before you will be issued a marching band uniform or T-shirt. We have the least expensive dues of any school in the area. Checks should be made payable to "SM South Band" and returned with the "Shoes and Dues" Form, found on the "Forms" tab on the website (click the "2017-2018 Band Forms-Dues/Permission/Uniform" link). These dues are deposited into the "Band Account" at SM South.

## Booster Club Membership Dues

Band Booster Club Membership Dues of \$30 per family will be collected from the band members at the same time as the Band Dues, before the uniforms go home. The Booster Club dues help continue funding the band at its current level, although the bulk of our budget comes from our fundraisers. For information on how the Band Boosters contribute to the band program at South, please visit the [Band Booster Club page](#) on the website. Checks should be made payable to "SMS Band Boosters" and returned with the "Shoes and Dues" Form. These dues are deposited into the "Band Boosters" account.

## Instrument Rentals

The school owns an inventory of certain instruments for student use. These must be rented for \$60 during the school year. A contract must also be signed and turned in before the student is given the instrument. After the contract is signed, the student is responsible for the care of the instrument. Reed replacement and repair or damage due to misuse is the student's responsibility. Summer rental is \$30. A new contract must be completed and signed for each school year, even if renting the same instrument. Rental forms are available on the "Forms" link of the band website or in the band office.

The list of available instruments includes: tenor and baritone saxes, bass clarinets, oboes, bassoons, French horns, frumpets, baritones, and tubas. Other instruments may be available through special arrangements with Mr. Adams. **All percussionists must pay the \$60 rental each year to use the school instruments.**

### Dues to pay at Band Camp

Band Dues	\$75.00
Shoes ( <i>if needed</i> )	\$25.00

#### **Check payable to SMS Band**

\*\*\*\*\*

Band Booster Club	\$30.00
-------------------	---------

(*one membership per family*)

#### **Check payable to SMS Band Boosters**

\*\*\*\*\*

Instrument Rental (*if needed*)  
\$60.00 **Check payable to SMSD**

### **Mark Your Calendar!**

Celebrate the 1st football game--and the start of MARCHING SEASON...

Band Potluck Dinner  
Friday, September 7<sup>th</sup>  
5:00pm to 6:30pm SMS  
Cafeteria

Watch for details in an upcoming Newsflash!

## Morning Rehearsals

During marching season, 1st hour band rehearsal begins promptly at 7:00 am and continues into 1st hour (the regular band class period). It is highly recommended that you have a pair of shoes and socks for these rehearsals different from those that you will wear the rest of the day. The practice field is often damp. You should also have a coat and gloves available. Later in the season, morning rehearsals can be very cold. *We do not have early practice on the first day of school. Early practices stop the Monday after the last performance.*

## Freshman (5th Hour) Band

During marching season, the freshman band will work on both marching and concert activities during 5th hour. Be prepared to go outside. See “Morning Rehearsals” for outdoor expectations. 5th hour band will join the 1st hour band on Wednesday mornings from 7:00-7:30 am for full group basics and pre-game practice during marching season. ***These are required rehearsals. 5th hour will not do Monday evening rehearsals.***

## Monday Evening Practice

1st hour practices every Monday evening from 7-8:30PM. We have the rehearsal at this time so our Fall athletes can attend rehearsals and to minimize other conflicts. It is impossible to find a time when there are not conflicts with this big a group but we have found Monday works the best. EACH REHEARSAL IS WORTH 75 POINTS! IF YOU DON'T ATTEND WITHOUT PRIOR APPROVAL FROM MR. ADAMS, YOU WILL NOT GET THE POINTS! WORK IS NOT AN ACCEPTABLE EXCUSE FROM REHEARSAL. Plan ahead! Though many of these will be indoor rehearsals only, make sure you have appropriate clothes for possible outdoor rehearsals. It may be quite hot or cold.

## Sectionals

A sectional is an extra rehearsal called for by either the section leader or one of the band directors. Any time a sectional is called, it is essential that all section members attend. A section leader should take roll and let Mr. Adams know if any members do not attend without a good excuse. Sectionals are used to improve the overall quality of the section. Memory, dynamics, pitch, etc., should be the goals of your sectionals. These rehearsals, if handled properly, can do much toward building section unity, both socially and musically. No band can truly be outstanding without regular sectional work. Section leaders should take it upon themselves to develop a regular sectional routine that fits the schedules of the section's members. Make sure that the directors know about the sectional so that doors can be unlocked. Notify them in person. Writing it on the board is not good enough. Staff members will be happy to help with sectionals if invited to do so by the section leader.

## Locker Registration

All Band Students Please Note:

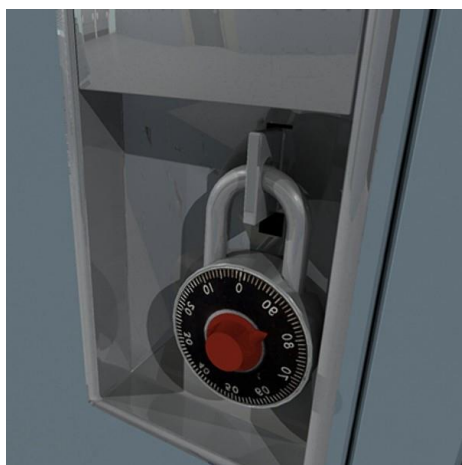
Bring a combination lock (preferably a Master Lock--no key locks) and you can get a Locker Registration Card. These are available in the Band Office. The lockers are labeled by number.

### Locker Policy

- \* Instruments can only be stored in lockers with locks on them.
- \* Only claim a locker made for your specific band instrument.
- \* Percussionists and tubas need to have individual lockers which must be on the south wall.
- \* Several small instruments cannot occupy a large locker (i.e. 4 trumpets in a baritone locker)
- \* "I forgot my combination" fee = 50 cents

If you are not at school and we need to get music or anything else inside your locker, **YOUR LOCK MAY BE CUT OFF IF:**

- \* You claim a locker without registering it.
- \* You move to a different locker without notifying a director about the change.



In order to stay informed about the latest information pertaining to the band and your student, make sure you are registered to receive newsflashes from BOTH Mr. Adams and the Booster Club. Sign up to be a member of [www.smsraiderband.org](http://www.smsraiderband.org) then "Follow" each news stream to get update notifications delivered directly to your email. Watch this video for detailed instructions: <https://www.youtube.com/watch?v=Qy3-0YdFMfk>

[www.smsraiderband.org](http://www.smsraiderband.org)

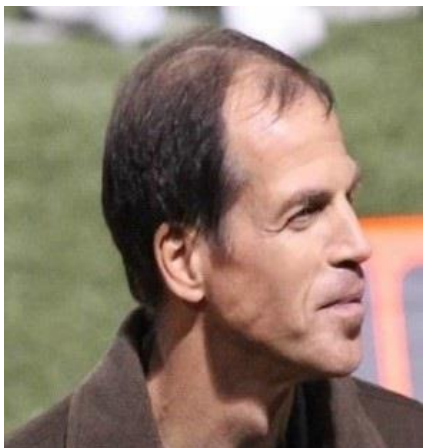
The website for the Rompin' Stompin' Raider Band

Webmaster: Craig Herrmann,

Craigh873@gmail.com



## STAFF CONTACT INFORMATION



Steve Adams (SMS)

993-7572

[soadams@smsd.org](mailto:soadams@smsd.org)



Paul Schapker (Elementary)

993-7572

[paulschapker@smsd.org](mailto:paulschapker@smsd.org)



Megan Hoelscher (Indian Woods)

993-0675

[MeganHoelscher@smsd.org](mailto:MeganHoelscher@smsd.org)



Cynthia Hartwell (SMS)

993-7582

[cynthiahartwell@smsd.org](mailto:cynthiahartwell@smsd.org)

Percussion Instructor—Evan Maslak

[evanmaslak@gmail.com](mailto:evanmaslak@gmail.com)

**Do parents and siblings have to pay to see the band?** *It depends. All band concerts are free, with the exception of the Evening of Jazz. All District football and basketball games do have an admission charge. The band gets in free, but parents and siblings do not. The SM Marching Festival is free, but most of the marching festivals require tickets.*

## Uniform Issuance

### Marching Band and Percussion Section

Uniforms will be issued in August during Band Camp. A complete uniform consists of:

- \* a green, gold, and white jacket with removable white neckband
- \* green bibbers (pants), shako (hat)--tubas do not wear this, black shako case
- \* black suit hanger

Marching shoes and long black socks are the marcher's responsibility. Black shoes for ALL marchers will be ordered en masse during camp. Approximate cost is \$25. Used shoes at significant savings **may** be available at that time.

### Care and Cleaning

Band uniforms cost nearly \$500 each and are not replaced for a number of years. Each student and family is responsible for the general care of the marcher's issued uniform. Dry clean when necessary. Neckbands should be laundered at home. **DO NOT** send the neckband or black hanger to the dry cleaners, as they probably won't be returned.

### Return

The official uniform return will be held on the night of the Winter Concert. Band members will receive extra credit points for the return of uniform on this specified date only. Any extra collection times will be announced with a Newsflash on the website.

**All uniforms must be returned along with the neckband, issued hanger, and shako case.**

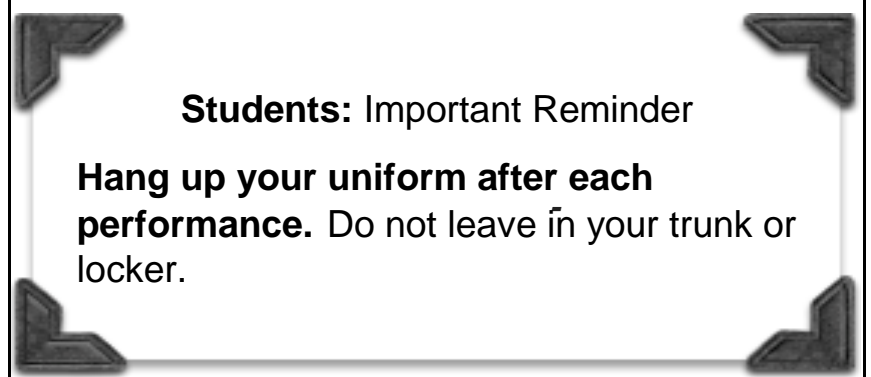
**The uniform committee will coordinate the final cleaning of the uniforms. The dry cleaning fee was included in band dues paid at the beginning of the year.**

## Contract

All marchers and their parents **must** sign and turn in the uniform contract, as well as a complete Fine Arts package with fee payments, before they will be issued a uniform.

Although the majority of students comply with the rules, there are always a few marchers who do not turn in their uniforms in a timely fashion or their uniforms are not in good condition. Please don't let that be you. These uniforms need to be used for several more years. With a signed contract and reminders from the website, uniforms are expected to be returned on time.

**Students who lose or do not return uniform parts must pay the replacement value listed on the contract. If not paid, the loss fees will be turned into SMS administration and grades may be held.**



### Parents: Please Note!

Please complete the BAND UNIFORM CONTRACT found on the "Forms" tab on website. Complete all the Forms and send them, along with 3 checks (see page 12), with your student to Band Camp. Forms and checks will be collected by parent volunteers during camp.

**You will need to print out BOTH sets of forms that begin with "20152016" and complete EVERY page, even the parts that don't seem to apply to you.**

The signed Uniform Contract and other forms will be kept on file at South.

All Forms **MUST** be on file in order for your student to receive his/her uniform.

***Any student who is not wearing the prescribed attire for any performance will not be allowed to perform and will not earn points for that performance.***

## **Concert Band and Freshman Band Uniforms**

### Boys' Uniform

Black slacks (not jeans or similar pants)

Black long sleeve dress shirt

Black shoes and long black socks

### Girls' Uniform

Black slacks or skirt (medium or long length)

Black long sleeve blouse/shirt

Black shoes with black hose or long black socks



## **Symphonic Band Uniforms**

### Boys' Uniform

Same as Concert/Freshman Band

### Girls' Uniform

Black dress is worn by all girls\*

Black shoes with black hose or long black socks

\*Dress is paid for by the individual student and ordered by the boosters.

## **Jazz Band Uniform**

The Jazz Band uniform consists of black pants, white tux shirt, black bow tie, black suspenders and black socks and shoes.

For Pep Band performances and some community concerts, the jazz band polo shirt will be worn with either khaki pants or jeans. The polo shirt will need to be purchased the first week of school. The charge for the shirt is approximately \$25.00.





### **Marching Band**

This is the most visible music group in the school, made up of both the 1st Hour and 5th Hour bands. The entire group performs in the pre-game show, the stands, pep assemblies, and parades. Only the 1st Hour band performs the halftime show and contests. During football season, the 1st Hour band meets at 7:00 am every morning except Thursdays for an extended rehearsal. 5th Hour band meets from 7:00-7:30 am on Wednesday morning during football season to rehearse with the 1st Hour band. After football season, 1st Hour divides into two groups that will perform at the Winter Concert.

### **Freshman Band**

Beyond its marching activities, this group's goals include continued development of technique, listening skills, ensemble skills, and sight reading. The band will perform at concerts and possibly participate in a festival geared towards younger bands. Class meets all year. 5th hour is open to all freshmen.

### **Concert Band**

This band will continue the development of individual and group skills with a further emphasis on musicality. The group may perform at State Contest as well as four concerts. Class meets second semester, 1st hour, and is open to all sophomores, juniors, and seniors. Freshmen may be admitted with special permission. Ms. Earney will be the principal conductor of this group.

### **Symphonic Band**

This group will consist of about 60 players. Instrumentation will be announced at least one month before auditions held in November. This group performs at State Contest and approximately six concerts. The literature tends to be of a challenging nature representing the music of many cultures and time periods. *Since this is the top group, students will not be excused from any performances unless for illness or emergency. Potential members of this group must look over the calendar and make sure they can make this commitment.* Class meets second semester, 1st hour, and is open to all grade levels. Selection is by audition.

### **Jazz Band**

This band will include 5 saxophones (2 altos, 2 tenors, 1 baritone), 4-5 trumpets, 4-5 trombones, and a rhythm section. Various jazz and rock styles will be studied through ensemble and improvisational work. The group performs around the area in concerts, festivals, and the Evening of Jazz. This group also is the basketball Pep Band second semester. Class meets all year, 4th hour, and is open to all grades. Selection is by audition in the spring.

### **Volunteer Pep Band**

The Pep Band performs for District away football games. Each performance is worth 50 extra credit points. The members of this group are volunteers from the marching band.

### **Orchestra Winds**

Members of this group are drawn from members of the Symphonic Band to combine with the strings to form a symphony orchestra. Mr. Wiebe will post a rehearsal schedule and performance schedule. The highest seated members of Symphonic Band are encouraged to participate in this exceptional opportunity. Participation can be used towards letter credit.

### **Europe Bands**

Members of the Symphonic and Jazz Bands are eligible for the Germany trip in June every 4 years. Additional musicians may be invited at Mr. Adams' discretion to improve the instrumentation of the traveling bands. On a trip year, a meeting will occur very soon after the Symphonic Band auditions are announced to present details including cost and itinerary of the trip. Check out link on this site, "[Words from Europe 2011 and 2015](#)" to get an idea of what the recent trip was like.

## AUDITIONS

Auditions for Symphonic Band will be in early November. **Placement for this second semester band is determined solely by audition results.** Auditions are optional but you must audition to have a chance at Symphonic Band!

Information on what music to prepare can be found on the "[Audition Information and Results](#)" link on the band website.

Auditions will cover the year's State solo music, which is also used for District band auditions. Information on obtaining the solo music will be made available to students during the first two weeks of school or the music selection will be posted on the band website.

The audition will be performed live for Mr. Adams.

The performance will also be taped for later evaluation. ***The auditions are "blind"; in other words, the judge will not know which student is performing. This ensures absolute fairness in the auditions.***

## Challenge Procedure

If, after initial placement, you are not content with your placement within your section, you may challenge to advance your position. Challenges will be over music the band is rehearsing. Mr. Adams will announce which specific tune will be played. Short excerpts will be performed and there will usually be two or three of these.

Challenges will be held a number of times during the semester. The person being challenged must accept the challenge or forfeit his/her position.

Details on this procedure will be presented in class.

## Tips

***Get the audition music as early as possible and really learn it.*** Find it on the "[Audition Information and Results](#)" link on the website.

***Go for more than just the notes.*** Dynamics, expression, pitch, and most of all tone are the ways to impress the judge.

It is normal to get nervous during your audition. ***Play for family and friends to minimize the negative effects of nerves.***

***The only way to practice sight reading is by doing it.*** Make it a regular part of your practice.

***Another valuable tip: accuracy is more important than speed.***

## Band Rules

**Common Sense:** This should really cover everything, but let us get a little more precise as to what is expected.

1. **All** Shawnee Mission District and Shawnee Mission South rules and policies apply to the band *anytime* we are together as the South Band, including all trips. See South Handbook.
2. **Three claps** by any director--the band yells "**SOUTH**" then becomes *silent and still*. On the field, the command or **whistle** to attention will be followed by the band shouting "**ONE, TWO**"--then coming to *complete attention*.
3. The band room is the home of much activity and is used by many students. You have the responsibility of making sure you and everyone else treats it with care. Let's keep it in great shape at all times. Clutter contributes to a crowded and uncomfortable atmosphere. It can also be dangerous. Use the trash cans. If the room becomes a mess, food and drink will no longer be allowed.
4. Never use someone else's equipment without his/her permission, including school owned instruments. Only percussionists may use drum equipment, and only those with permission may use the electric keyboard and stereo. Mr. Adams' office is for staff members. Students are not to use it without permission, including the phone.
5. Always keep your instrument locker locked when you are not in the room. You must provide a combination lock; no key locks will be accepted. Give Mr. Schapker the combination plus the lock's serial number. He will then assign you a locker. You will be charged 50 cents if you forget your combo. The school is providing a secure locker. It is your responsibility to take care of your stuff. **For more information see page 14.**
6. In general, **if it will detract from someone else's enjoyment or hurt the quality of your band, don't do it. Use your head!**

## Further Notes on Conflicts

### Work & Club Sports

These are not an excuse for missing scheduled rehearsals or performances. There may be very special situations where Mr. Adams may make an exception to this policy, but you must talk to him early about these and understand that the policy is that these events are not excused. The earlier you talk to Mr. Adams, the better your chance will be for him to excuse you.

### Travel

Please use the Calendar on the website when you are planning travel. *The key here is to communicate if conflicts are unavoidable.*

### Sports and School Activities

*The school has a priority list for conflicting school events that all faculty must respect. Most coaches, sponsors, and Mr. Adams work together very well to work things out between programs. Generally, only varsity sports are considered for missing band performances. That said, late arrivals, early dismissals, and similar creative compromises are often worked out for conflicting events. **Again, the key is early communication with the other sponsor and Mr. Adams.***



## Band Grading

Band is a performance oriented class, thus performances carry great weight in determining grades. Each performance is a culmination of weeks of work. Only under the most extenuating of circumstances will a missed performance be excused. **If a conflict does arise, notify Mr. Adams as early as possible with a detailed, signed, written note or email from your parent or guardian. *Vague excuse notes and avoidable last minute requests are not acceptable.*** Each individual has a major role in the success of the entire group. Here is how quarterly grades will be computed.

- |    |   |                         |
|----|---|-------------------------|
| 1. | Each memorized tune ( <i>Marching Band only</i> ) | 100 points each         |
| 2. | Quizzes ( <i>written or played</i> )              | Up to 50 points each    |
| 3. | Tests   | 200 points each         |
| 4. | Performances                                      | 200 points              |
| 5. | No instrument or music ( <i>each day</i> )        | -20 points/day          |
| 6. | Monday evening practices (1st Hour)               | 75 points per rehearsal |
| 7. | Wednesday AM practices (5th Hour)                 | 50 points per rehearsal |

\* Depending on the circumstances, further penalties may accrue from missing a performance or rehearsal.

\* Since **Symphonic Band** is a select group, our varsity, the bar is very high for excused absences in that group. It is expected the group always performs with its full complement of members. **Marching contests** are a "high priority" since we compete and are scored by judges. Missing performers will lower our score.

## Jazz Band Grading

The jazz band has performed and written major projects due every quarter. All scale projects must be performed ascending and descending, one octave; in all twelve keys, with a time limit of one minute are the same for each level. Scales are performed during class. Reviews over CDs in the band's jazz library should be roughly one page long while the biography paper should be five pages. Due dates for scales and reviews are one week before the end of the quarter. Biographies will have assigned dates that correspond with students' oral presentations. Jazz Band members are also required to perform at a schedule of home basketball games. A schedule will be handed out in November.

1st quarter	Major scales	100 points	3 reviews	50 points each		
2nd quarter	Mixolydian Scales	100 points	3 reviews	50 points each	Basketball	30 points each
3rd quarter	Dorian Scales	100 points	Biography	100 points	Basketball	30 points each
4th quarter	Blues Scales	100 points	3 reviews	50 points each		

## Pass-Off Program

Members of all bands will be involved in pass-off projects. Students will have assignments dealing with passing off different scales, usually by memory and timed. These are major parts of students' requirements. Scale projects must be learned over an extended period of time. Do not try to "cram" for these tests.

## Band Awards

Band awards are presented at the end of the Spring Concert. The awards include recognition for marching band section leaders, seniors, officers, and those who have made special contributions to the band. All-State participants, drum majors, President, and Outstanding Band and Jazz musicians are also recognized. You must be a member of the band for the entire year to receive one of these awards.

## Lettering in Band

Lettering in band will follow the guidelines set by the Shawnee Mission South Honors and Awards Committee. Currently, any student who completes the following requirements will be awarded a First Year Letter and pin. They will receive a bar to go on their letter for each subsequent year that they complete the requirements. You will move to the First, Second, and Third Year Letter levels. The requirements are the same for each level.

### **Automatic Band Letter:**

- \* Earned a position in State Band
- \* Earned a first division rating at State Solo and Ensemble Festival in a band event.

Otherwise, a student must have earned at least three of the following descriptions (freshmen must earn two) and must have no serious discipline infractions. An unexcused missed performance will automatically disqualify a student from letter consideration. ***To letter, a student must have participated in band class the entire year.***

- \* Served as Band Officer
- \* Served as Section Leader in Marching Band
- \* Earned a position in District Band
- \* Performed at Regional Solo and Ensemble Festival in an instrumental event
- \* Performed at State Solo and Ensemble Festival in an instrumental event
- \* Participated in outside performances (community or church) as a soloist or in a small ensemble (no more than 55 members). This may only count toward the letter once. Provide written proof of your participation such as a program or note from your parents or the sponsor of the event.
- \* Participated in a select large ensemble outside of school, such as the KC Youth Wind Ensemble, Youth Symphony, KMEA 9th Grade Honor Band, etc. This may only count toward the letter once. Provide written proof of your participation such as a program or a note from your parents or the sponsor of the organization.



### Overland Park Parade

Saturday, September 29, 2018 @ 10:00 am (1<sup>st</sup> and 5<sup>th</sup> hour bands)

Free Event

Probably the largest audience to see the band each year is at the Overland Park Parade. In late September, we march down the streets of downtown Overland Park, along with floats, politicians, various local organizations and other Shawnee Mission high school marching bands.

### Shawnee Mission Marching Festival

Monday, October 1, 2018 @ 7:00pm. (1<sup>st</sup> hour only)

Free Event (Rainout Date is the following Monday October 8<sup>th</sup>)

Held at South Stadium, this is our best look at what other Shawnee Mission bands are doing this year, and their best look at us. The festival is not judged, but you can't help comparing the groups. We've got to look good for this one.

### Lee's Summit North Marching Festival

Saturday, Oct 6, 2018 (1<sup>st</sup> hour only)

Lee's Summit North HS, Lee's Summit, MO

Admission is charged.

### Festival of Champions Marching Festival

Saturday, Oct 20, 2018 All Day (1<sup>st</sup> hour only)

Warrensburg, MO

Admission is charged

### Masterworks Concert

Thursday, January 31<sup>st</sup>, 2019 @ 7:00pm

Free Event.

This concert is held in January and features the most talented musicians in South's Choir, Symphonic Orchestra, and Symphonic Band. There are 3 featured soloists, one performing with each group. Expect a fantastic concert! After the concert, help honor the soloists by attending a reception planned by members of all three booster clubs.

### State Band Festival

Wednesday, April 10, 2019 during school hours (Symphonic and Concert Bands)

Free Event

The Symphonic and Concert Bands perform two works for three judges. Ratings are given to each performing band. Months of preparation go into the performance. This should be our strongest performance of the year.

After a rigorous audition in early November at Olathe East, two concert bands and a jazz ensemble are formed from the finest players in Eastern Kansas. **To make these ensembles is a real honor for any student.** A day of practice with a nationally acclaimed director culminates with a memorable concert held in an area high school in early December.

Any band student can audition for honor **beginning his or her sophomore year.** If you perform in this concert, you **earn the right to audition** for the Kansas All-State Band, Jazz Band, or Orchestra. To make these ensembles is the **highest goal a Kansas high school musician can achieve.**

All-State auditions will be performed live on a Saturday in January in Salina, Kansas. The school will provide bus transportation. Those who make one of the ensembles will practice for **three days with one of the best conductors in the country** and then perform in concert before a massive audience of music teachers and family members. This all takes place in Wichita.

Transportation and lodging for this February event are provided by the school. Talk to those who have made it. They will tell you that it is a wonderful experience! <http://www.ksmea.org/home/index.php>

### Special Note to Parents...

**Nothing can aid your student more than regular practice, augmented by private lessons with a trained musician. Also, nothing can hinder his or her progress more than an instrument in poor repair. Give your young musician every opportunity to reach his or her full potential.**

### So what happens after marching season?

Things don't slow down at all as marching season ends and concert season begins.

In early November, auditions begin for the 2nd semester Symphonic Band. **District Band** auditions in Olathe, KS at Olathe East HS, for 10th-12th grades, are also in early November. **District Band Concert** is always a Saturday in early December (see above).

The **Winter Concert and Chili Dinner** is an evening of socializing, great music, and the traditional "Sleigh Ride" concert ending. Marching band uniforms will be collected before the concert. Please make sure to have all the parts ready to turn in. Those that turn in their uniform that night do not have to take the 1st semester final!

The 2nd semester is packed full of events and concerts; the Pep Band (Jazz Band) plays at home basketball games, **Masterworks, Pre-State, Regional Solo and Ensemble Festival, State Music Festival, SM Symphonic Festival, South Area Band Festival, Spring Band Concert,** and finally, **Evening of Jazz.**



### Regional and State Solo & Ensemble Festivals

Many of our students choose to participate in the Regional Solo and Ensemble Festival held in early April. This is a rewarding activity for the motivated musician.

**Prepare a solo with piano accompaniment or an ensemble of three or more people.** First, you will go to regional competition and perform before a judge and often a small, but interested, audience.

**If you earn a “1”, you qualify to perform at the State Festival.** Again, you perform before a judge. The standards are higher because everyone who performs has earned a “1” at the regional level. Judges’ comments will be given to the performer. A certificate of achievement will be given for a “2” rating, and a medal will be given for a “1” rating at both the regional and state festivals.

Memorization is no longer a requirement for any event at this festival. ***When purchasing music, make sure that you have 3 (three) original copies of the music for the judge, accompanist, and yourself. No photocopies are allowed for the judge or the performer due to copyright laws.***

This program is a terrific way for a musician to express himself/herself as an individual plus a chance to be recognized for his/her talent.

#### Special Tips for Preparation of Solos

##### Selecting Your Music

When selecting music, be careful. Select a work that shows off your talents, yet is technically and musically attainable. Look at the piano part too (better yet, have your pianist look at it). Is it going to cause any special problems? Your private teacher should have plenty of input.

##### Your Accompanist

When you perform a solo you are actually performing a duet with your piano accompanist. **Therefore, it is essential that you line up a competent pianist as early as possible.** I would suggest getting your piano player as soon as you decide you will be performing a solo, months ahead of the performance. Get the **original copy** of your music to the pianist as soon as it is available. **Plan to pay your pianist for his/her efforts!** This assures a commitment of time and quality from him/her. Plan adequate rehearsal time with your pianist. Include a few times when your pianist, private teacher, and you can all be present.

There is a five minute time limit on solos, which includes tuning. You may make cuts to the solo. Judges will stop you if you go overtime. This doesn’t affect your rating, but it’s not fun, especially when you have spent hours working out that last page and then don’t get to play it.

#### Special Tips or Preparation of Ensembles

The best tip is to plan regular rehearsals. Start months ahead so that your group can really work out ensemble balance, intonation, phrasing, etc. Even though in a contest you can only perform one five-minute work (percussion has 12 minutes, which includes set-up), this should not limit you to rehearsing only one piece. The best small ensembles have a number of works they can perform. Being a part of a regularly practicing small ensemble can be one of the most enjoyable playing outlets you can get involved in, and it is a great way to develop your musicianship.

***CLARIFICATION-IF THE DOOR PERSON SUGGESTS THAT YOU PLAY EARLY BECAUSE THEY HAVE AN OPENING, ONLY ACCEPT IF YOU WANT TO. YOU CAN ALWAYS WAIT UNTIL YOUR ASSIGNED TIME.***

***THIS HAS CAUGHT STUDENTS OFF GUARD BEFORE, AND THEY HAVE PLAYED BEFORE BEING FULLY WARMED-UP OR MENTALLY PREPARED. NO HURRY.***

# BAND BOOSTERS FUNDRAISING

## Why Do We Raise Funds?

Running the SM South Band is an expensive project. Because the Band Booster Dues only augment our fundraisers, we ask that all band families continue or exceed their current fundraising participation.

Proceeds from all fundraisers are used to support projects beneficial to the Shawnee Mission South Band, and through the mechanism of Student Accounts, to afford students the opportunity to earn money for various band-related expenses, including at least one band trip during his/her high school career.

The number of activities we undertake depends on how successful each project is and what the needs are that year.

Recently the Boosters, South, and the District combined their resources to completely replace our marching brass baritones, frumpets, and sousaphones with all new silver instruments.

We hope that all students will take advantage of the opportunity to participate in the fundraising events to help support their band.

## Band Booster Fundraising Helps Provide:

- \* Marching Instruments
- \* Water for marching band after pre-game and half-time shows
- \* Awards for students
- \* Sending drum majors to leadership camp each summer
- \* Beach Party during Band Camp
- \* Senior Recognition--Fall and Spring
- \* Hosting Germany Exchange Trip--Overland Park portion
- \* Extra instructors
- \* End of Year Band Picnic

## Typical Annual Band Program Expenses

- \* Instruments
- \* Extra instructors
- \* Transportation to competitions
- \* Audio-Visual equipment
- \* Clinicians
- \* Music and Drill Writer for Marching Show
- \* Music for Concert and Jazz Bands
- \* Replacement of old drum heads, mallets, pieces, etc.

## Fundraising Policies

Fundraisers are primarily sponsored by the Band Boosters, and participation is optional for all events, although we do hope that all families will participate according to their abilities. Fundraisers may be added or dropped from year to year as the situation warrants. The policies will be subject to review each year by the incoming Band Booster board. The proceeds from most of our fundraisers are divided between the band's need, which are listed above, and the students' individual accounts.

## Individual Student Accounts

Students have the opportunity to apply a portion of revenues they bring in from miscellaneous fundraisers to their designated student accounts. The Band Booster Treasurer will keep track of each student's account. In the past some students actually earned all of their Florida trip money. This is an excellent opportunity to support the Band and earn money for personal band expenses. The Band Booster Board has approved that individual Student Accounts can be used to pay for most band-related expenses. ***Student Accounts may not be used for Booster Club dues.***

**Examples of personal band expenses that can be paid with student account:**

- \* Band Dues
- \* Marching Shoes
- \* Trips

**Guidelines for Using Student Accounts:**

- \* You may access your student's account balance through the website. Contact the current webmaster or treasurer to obtain your individual password in order to access the account.
- \* **Please be patient at the beginning of the school year. There are obviously many accounts to set up. After a fundraiser, the treasurer will send a Newsflash when all student accounts have been updated.**
- \* You must give prior notice, before deadlines, to give time for the Treasurer to transfer funds.
- \* You must have enough in your account to completely cover the cost of what you are paying for, with the exception of trips.
- \* Money in a student's Individual Student Account may be carried forward from year to year until used toward expenses, or until he/she leaves the band program. No funds in the student's account will be remitted to the student, or to the student's family. However, funds remaining in an account can be transferred to a sibling's account.
- \* *In the event there are funds remaining: **Any money in a student's account at the time of graduation, or upon leaving the band program, will be used to fund the Germans' visit, every four years, to Overland Park, which is a very worthy cause.***

## **Please take a moment to look over this information and volunteer to help the band!**

The band and booster club committees count on the many parent volunteers to help all during the year. There are many ways to be involved--all are fun, free, and rewarding! The activities needing volunteers are listed below. The more volunteers we have, the faster the job gets done and the more fun we have!

### **DURING BAND CAMP**

- \* **FORMS AND FEES:** Assist with collecting forms and fees during band camp.
- \* **UNIFORMS:** Assist with fitting and distributing uniforms to all the marchers. Assist with uniform returns at the end of marching season.

### **DURING MARCHING SEASON**

- \* **CHAPERONES:** 2-4 parents are needed for each bus when the band travels to competitions and festivals.
- \* **PLUMES:** Help distribute and collect shako plumes at home games, festivals, and parades.
- \* **SENIOR RECOGNITION:** Pick up balloons and bring to stadium for senior night in the fall.
- \* **SPIRIT ITEM SALES:** Help sell spirit items before home games in August, September, and October
- \* **WATER BRIGADE:** Help prepare and serve water during marching festivals, parades, and at home football games (after the pre-game show and halftime) in August, September, and October

### **DURING CONCERT SEASON**

- \* **EVENING OF JAZZ:** Help with setup on Friday, or help on Saturday evening with ticket sales at the door, filling food orders for student servers, and clean up after the event.
- \* **MASTERWORKS RECEPTION:** This event is to honor the soloists who perform in the Masterworks Concert immediately after the concert. Help is needed to set up before the concert, serve, or clean-up after the reception.
- \* **ROMPIN' STOMPIN' RAIDER FUN 5K:** Help with registration packets, set-up, at the event, and clean-up
- \* **SENIOR RECEPTION:** Held to honor band seniors immediately after the spring concert. Help is needed to set up before the concert, serve, or clean-up after the reception.
- \* **SILENT AUCTION:** This fundraiser is held during the Evening of Jazz. Help is needed soliciting donations for the auction, setting up merchandise, monitoring tables, and cashiering.
- \* **MISCELLANEOUS:** If you would like to volunteer, but aren't sure where or when, we will put you on a list to call when extra help is needed.

### **FUNDRAISERS**

- \* **MISCELLANEOUS:** Miscellaneous individual fundraising opportunities determined by booster club.

**For more information or to volunteer, contact: Julie Bogner 816-210-7972 KEVJUL4@AOL.COM**