

Trombone



Mystery Songs

Trombone

1

Measures 1-5 of the first Trombone part. The music is in bass clef with a key signature of two flats (B-flat and E-flat) and a 3/4 time signature. Measure 1 contains a triplet of eighth notes. Measures 2-5 feature a melodic line with eighth-note triplets in measures 3, 4, and 5.

Trombone

2

Measures 1-4 of the second Trombone part. The music is in bass clef with a key signature of two flats and a 3/4 time signature. The tempo/style is marked "swing". Measure 1 has a whole rest. Measures 2-4 contain a melodic line with eighth notes.

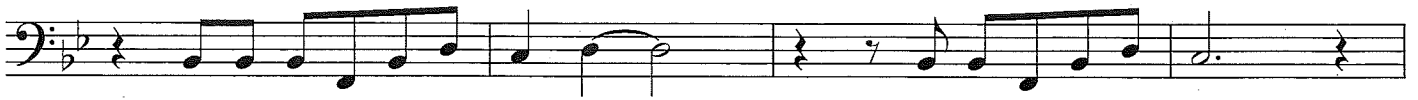
Trombone

3

Measures 1-10 of the third Trombone part. The music is in bass clef with a key signature of two flats and a 3/4 time signature. Measure 1 has a whole rest. Measures 2-10 contain a melodic line with eighth notes and quarter notes.

Trombone

4



5



Trombone

5



5



9



Trombone

6



6



Trombone

10

Musical notation for Trombone exercise 10. The piece is in bass clef with a 4/4 time signature. It begins with a whole rest. The first five measures each contain a triplet of eighth notes, with a '3' written below each group. The notes in the triplets are: G2, A2, B2; G2, A2, B2; G2, A2, B2; G2, A2, B2; and G2, A2, B2. The piece concludes with three whole rests.

Trombone

11

Musical notation for Trombone exercise 11. The piece is in bass clef with a 12/8 time signature. It consists of four measures. The first measure has a quarter note G2, a quarter note A2, and a quarter note B2. The second measure has a quarter note G2, a quarter note A2, and a quarter note B2. The third measure has a quarter note G2, a quarter note A2, and a quarter note B2. The fourth measure has a quarter note G2, a quarter note A2, and a quarter note B2. The piece concludes with a whole rest.

5

Musical notation for Trombone exercise 11, continuing from the previous system. It consists of five measures. The first measure has a quarter note G2, a quarter note A2, and a quarter note B2. The second measure has a quarter note G2, a quarter note A2, and a quarter note B2. The third measure has a quarter note G2, a quarter note A2, and a quarter note B2. The fourth measure has a quarter note G2, a quarter note A2, and a quarter note B2. The fifth measure has a quarter note G2, a quarter note A2, and a quarter note B2. The piece concludes with a whole rest.

Trombone

12

Musical notation for Trombone exercise 12. The piece is in bass clef with a 4/4 time signature. It begins with a whole rest. The first four measures each contain a triplet of eighth notes, with a '3' written below each group. The notes in the triplets are: G2, A2, B2; G2, A2, B2; G2, A2, B2; and G2, A2, B2. The piece concludes with a whole rest.

Trombone

13



Trombone

14



5



Trombone

15

