

Tenor Sax



Mystery Songs

Tenor Saxophone

1

Measures 1-5 of Tenor Saxophone #1. The music is written on a single staff in treble clef. Measure 1 starts with a rest. Measures 2-5 contain eighth notes with triplet markings (3) and a fermata over the final note of measure 5.

Measures 6-9 of Tenor Saxophone #1. Measure 6 starts with a rest. Measures 7-9 contain eighth notes with triplet markings (3) and a fermata over the final note of measure 9.

Tenor Saxophone

~~#~~ 2

Measures 1-4 of Tenor Saxophone #2. The music is written on a single staff in treble clef, 3/4 time signature, with a key signature of one flat (Bb). The tempo/style is marked "swing". Measure 1 starts with a rest. Measures 2-4 contain eighth notes.

Measures 5-8 of Tenor Saxophone #2. Measure 5 starts with a rest. Measures 6-8 contain eighth notes.

Tenor Saxophone

3

Measures 1-6 of Tenor Saxophone #3. The music is written on a single staff in treble clef, with a key signature of one sharp (F#). Measure 1 starts with a rest. Measures 2-6 contain eighth notes.

Measures 7-9 of Tenor Saxophone #3. Measure 7 starts with a rest. Measures 8-9 contain eighth notes.

Measures 10-12 of Tenor Saxophone #3. Measure 10 starts with a rest. Measures 11-12 contain eighth notes.

Tenor Saxophone

#4

Musical notation for Tenor Saxophone #4, measures 1-5. The key signature is one flat (Bb). The notation consists of two staves. The first staff contains measures 1-4, and the second staff contains measure 5. The music features eighth and sixteenth notes with various rests and a fermata over the final note of measure 5.

Tenor Saxophone

#5

Musical notation for Tenor Saxophone #5, measures 1-9. The key signature is one sharp (F#). The notation consists of three staves. The first staff contains measures 1-4, the second staff contains measures 5-8, and the third staff contains measure 9. The music features a complex rhythmic pattern with many sixteenth notes and rests.

Tenor Saxophone

#6

Musical notation for Tenor Saxophone #6, measures 1-7. The key signature is one flat (Bb). The notation consists of two staves. The first staff contains measures 1-5, and the second staff contains measures 6-7. The music features triplets and a first ending bracket over the final measure of the first staff.

Tenor Saxophone

7



5

D.C. al fine



Tenor Saxophone

8



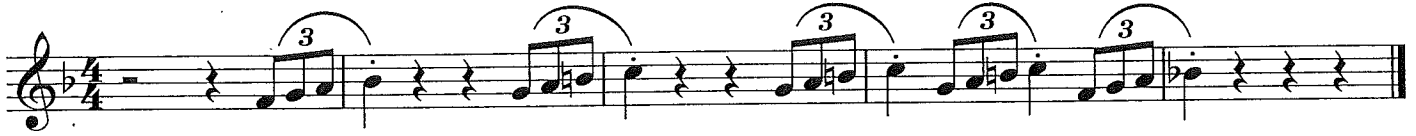
Tenor Saxophone

9



Tenor Saxophone

#10



Tenor Saxophone

#11



Tenor Saxophone

#12



Tenor Saxophone

#13



Tenor Saxophone

#14



Tenor Saxophone

#15

